

FINO 1

HLD IDENTIFICATION
FINO1

ICAO IDENTIFIER
EDYF

OSS SIDE IDENTIFICATION
FINO 1

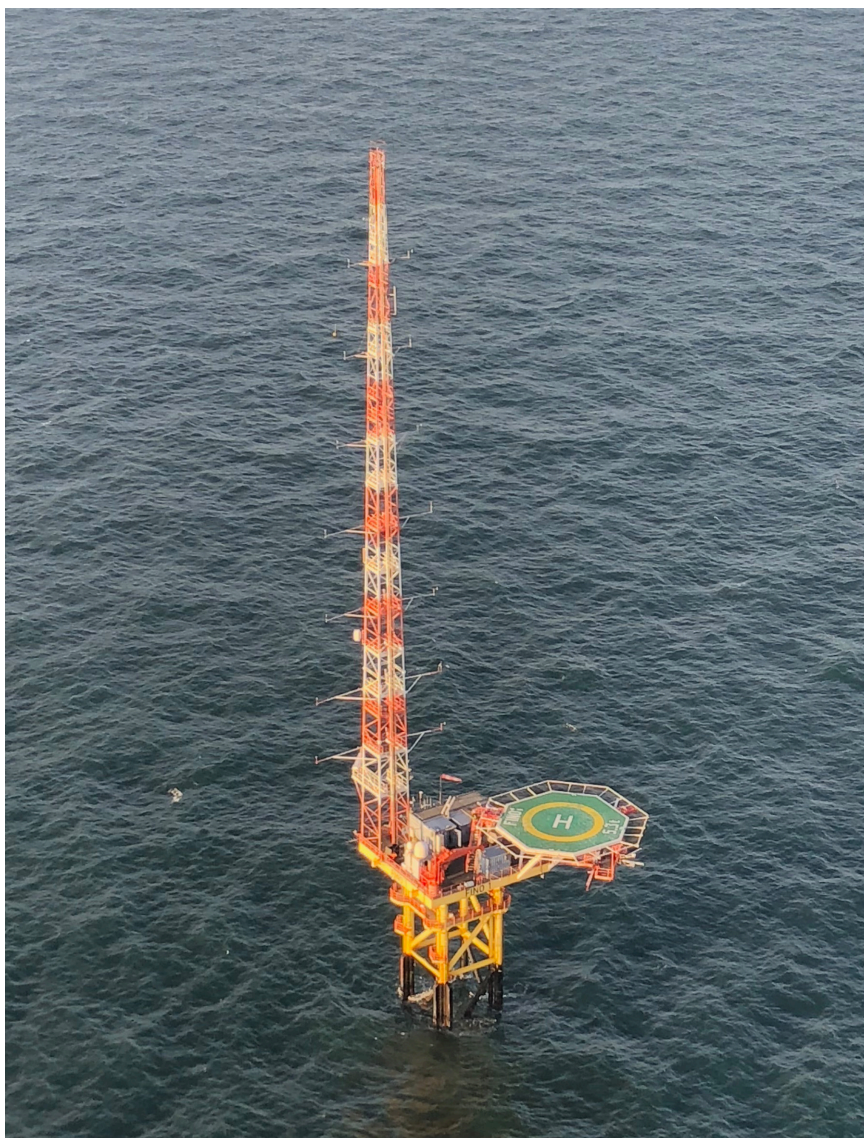
FIXED NORMALLY UNATTENDED INSTALLATION
FuE ZENTRUM FH KIEL GMBH

HLD REFERENCE POINT

N 54° 00.90'

E 006° 35.26'

BREMEN INFORMATION 128.525 MHz		FINO-1-PLATFORM 131.925 MHz		EWE CONTROL CENTRE (AV) 122.900 MHz	
WEATHER INFORMATION N/A 7x			LIGHTING & DIMMING N/A 3x 100% 4x 30% (10%) 5x 10% (3%)		
HELIDECK HEIGHT 80 ft MSL		D-VALUE 14 m		MTOW 5,3 t	
PREFERRED APPROACH / DEPARTURE DIRECTION 090 / 270° DECK HEADING 360°					
HIGHEST OBSTACLE ON INSTALLATION 340 ft AMSL / 260 ft AHLD (ANTENNA MAST)			HIGHEST OBSTACLE IN THE VICINITY 509 ft MSL (WTG ALPHA VENTUS)		
REFUELLING FACILITY N/A	GROUND POWER UNIT N/A		LANDING NET N/A	STATUS LIGHT N/A	
FIRE FIGHTING FACILITIES					
PRIMARY FIFI N/A	SECONDARY FIFI N/A		CO₂ 2 x 20 kg	DRY POWDER 2 x 50 kg	



FINO 1

HLD IDENTIFICATION

FINO1

ICAO IDENTIFIER

EDYF

OSS SIDE IDENTIFICATION

FINO 1

FIXED NORMALLY UNATTENDED INSTALLATION

FuE ZENTRUM FH KIEL GMBH

HLD REFERENCE POINT

N 54° 00.90'

E 006° 35.26'

BREMEN INFORMATION 128.525 MHz		FINO-1-PLATFORM 131.925 MHz		EWE CONTROL CENTRE (AV) 122.900 MHz	
WEATHER INFORMATION N/A 7x			LIGHTING & DIMMING N/A 3x 100% 4x 30% (10%) 5x 10% (3%)		
HELIDECK HEIGHT 80 ft MSL		D-VALUE 14 m		MTOW 5,3 t	
PREFERRED APPROACH / DEPARTURE DIRECTION 090 / 270° DECK HEADING 360°					
HIGHEST OBSTACLE ON INSTALLATION 340 ft AMSL / 260 ft AHLD (ANTENNA MAST)			HIGHEST OBSTACLE IN THE VICINITY 509 ft MSL (WTG ALPHA VENTUS)		
REFUELLING FACILITY N/A	GROUND POWER UNIT N/A		LANDING NET N/A	STATUS LIGHT N/A	
FIRE FIGHTING FACILITIES					
PRIMARY FIFI N/A		SECONDARY FIFI N/A		CO ₂ 2 x 20 kg	
DRY POWDER 2 x 50 kg					
NON - COMPLIANCES <ul style="list-style-type: none"> • CRANE BOOM BELOW HLD WITHIN 180° SECTOR • PERIMETER SAFETY NET EXCEEDS HLD HEIGHT • LIMITED FIFI CAPACITY • FOR FURTHER DETAILS SEE AERODROME INSTRUCTIONS 			LIMITATIONS <ul style="list-style-type: none"> • VFR DAY ONLY 		
REMARKS <ul style="list-style-type: none"> • CONTACT EWE CONTROL (OWF ALPHA VENTUS) CENTRE 10 MINUTES PRIOR TO APPROACHING FINO1 • BE AWARE OF FINO1 ANTENNA MAST (340 ft MSL) • BE AWARE OF WTG (OWF ALPHA VENTUS, BKR01, BKR02, MERKUR) IN VICINITY TO HELIDECK • BE AWARE FATO IS UNLIT • FLIGHT OPERATIONS ONLY TO BE CONDUCTED WITH CRANE IN RESTING POSITION • HLD AVAILABLE FOR INDUCTED FLIGHT CREWS ONLY 					

FINO 1

HLD IDENTIFICATION
FINO1

ICAO IDENTIFIER
EDYF

OSS SIDE IDENTIFICATION
FINO 1

FIXED NORMALLY UNATTENDED INSTALLATION
FuE ZENTRUM FH KIEL GMBH

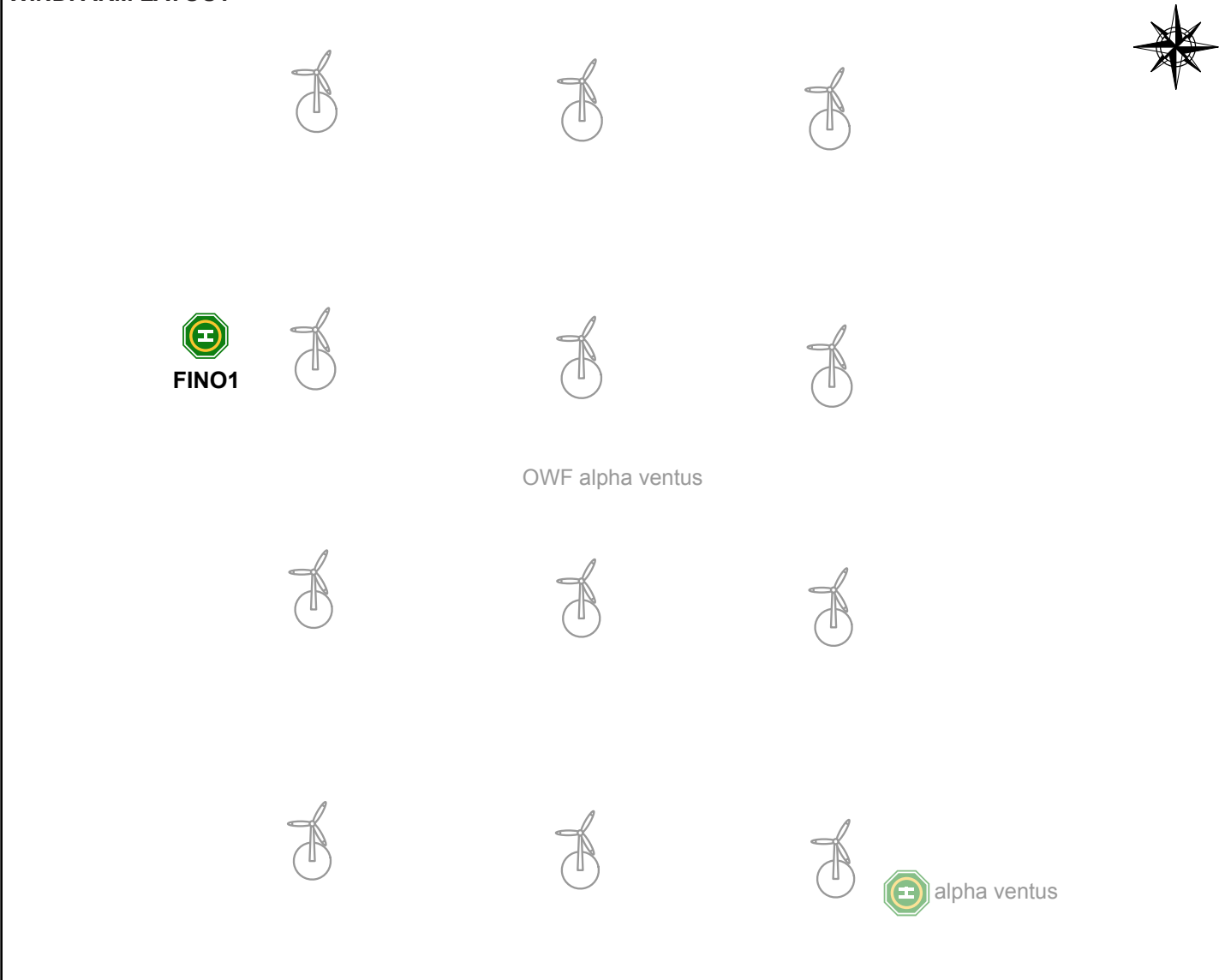
HLD REFERENCE POINT

N 54° 00.90'

E 006° 35.26'

BREMEN INFORMATION 128.525 MHz	FINO-1-PLATFORM 131.925 MHz	EWE CONTROL CENTRE (AV) 122.900 MHz	
WEATHER INFORMATION N/A 7x		LIGHTING & DIMMING N/A 3x 100% 4x 30% (10%) 5x 10% (3%)	
HELIDECK HEIGHT 80 ft MSL	D-VALUE 14 m	MTOW 5,3 t	
PREFERRED APPROACH / DEPARTURE DIRECTION 090 / 270° DECK HEADING 360°			
HIGHEST OBSTACLE ON INSTALLATION 340 ft AMSL / 260 ft AHLD (ANTENNA MAST)		HIGHEST OBSTACLE IN THE VICINITY 509 ft MSL (WTG ALPHA VENTUS)	
REFUELLING FACILITY N/A	GROUND POWER UNIT N/A	LANDING NET N/A	STATUS LIGHT N/A
FIRE FIGHTING FACILITIES			
PRIMARY FIFI N/A	SECONDARY FIFI N/A	CO₂ 2 x 20 kg	DRY POWDER 2 x 50 kg

WINDFARM LAYOUT



FINO 1

HLD IDENTIFICATION
FINO1

ICAO IDENTIFIER
EDYF

OSS SIDE IDENTIFICATION
FINO 1

FIXED NORMALLY UNATTENDED INSTALLATION
FuE ZENTRUM FH KIEL GMBH

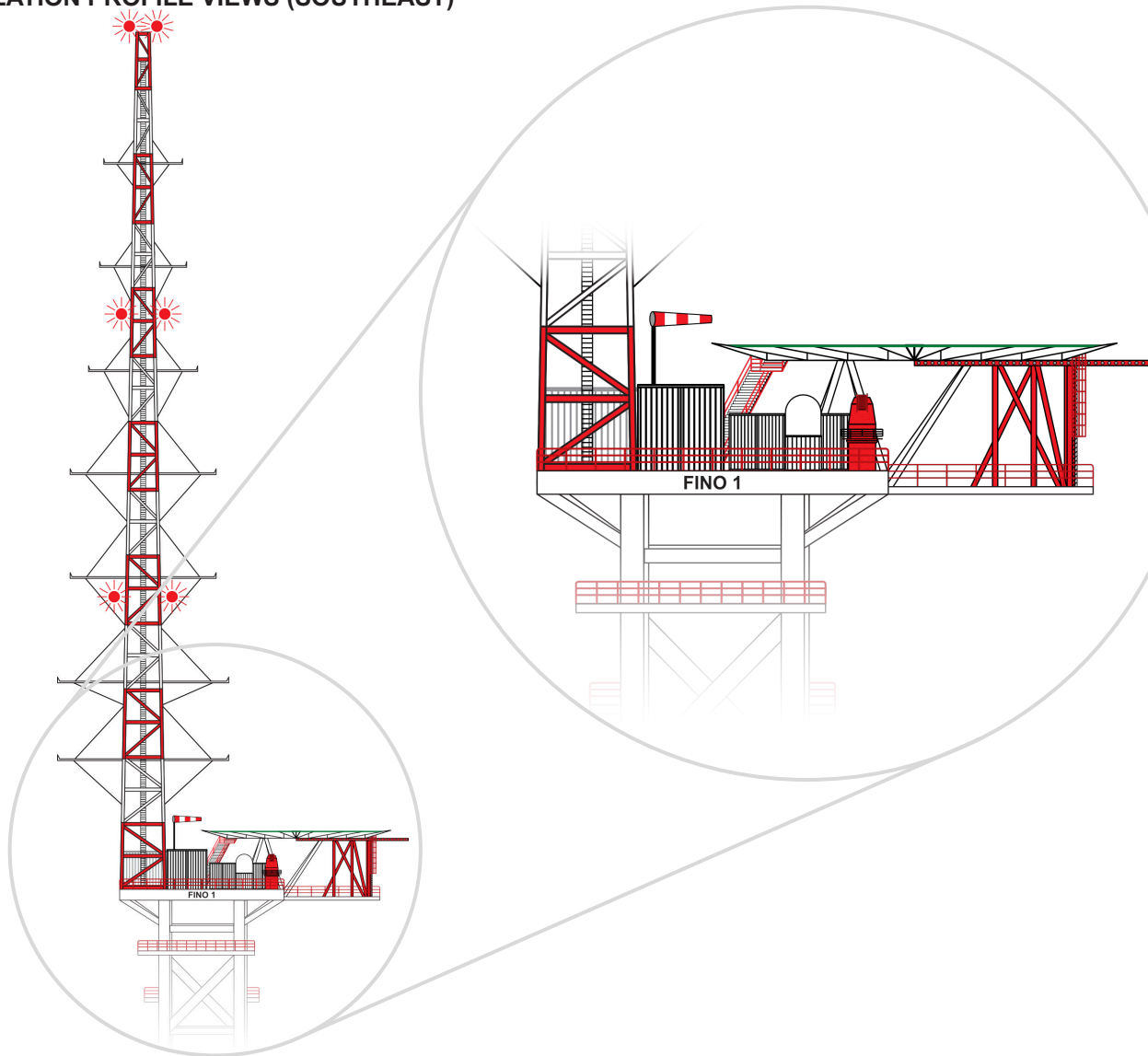
HLD REFERENCE POINT

N 54° 00.90'

E 006° 35.26'

BREMEN INFORMATION 128.525 MHz	FINO-1-PLATFORM 131.925 MHz	EWE CONTROL CENTRE (AV) 122.900 MHz	
WEATHER INFORMATION N/A 7x		LIGHTING & DIMMING N/A 3x 100% 4x 30% (10%) 5x 10% (3%)	
HELIDECK HEIGHT 80 ft MSL	D-VALUE 14 m	MTOW 5,3 t	
PREFERRED APPROACH / DEPARTURE DIRECTION 090 / 270° DECK HEADING 360°			
HIGHEST OBSTACLE ON INSTALLATION 340 ft AMSL / 260 ft AHLD (ANTENNA MAST)		HIGHEST OBSTACLE IN THE VICINITY 509 ft MSL (WTG ALPHA VENTUS)	
REFUELLING FACILITY N/A	GROUND POWER UNIT N/A	LANDING NET N/A	STATUS LIGHT N/A
FIRE FIGHTING FACILITIES			
PRIMARY FIFI N/A	SECONDARY FIFI N/A	CO₂ 2 x 20 kg	DRY POWDER 2 x 50 kg

INSTALLATION PROFILE VIEWS (SOUTHEAST)



FINO 1

HLD IDENTIFICATION
FINO1

ICAO IDENTIFIER
EDYF

OSS SIDE IDENTIFICATION
FINO 1

FIXED NORMALLY UNATTENDED INSTALLATION
FuE ZENTRUM FH KIEL GMBH

HLD REFERENCE POINT

N 54° 00.90'

E 006° 35.26'

BREMEN INFORMATION 128.525 MHz	FINO-1-PLATFORM 131.925 MHz	EWE CONTROL CENTRE (AV) 122.900 MHz	
WEATHER INFORMATION N/A 7x		LIGHTING & DIMMING N/A 3x 100% 4x 30% (10%) 5x 10% (3%)	
HELIDECK HEIGHT 80 ft MSL	D-VALUE 14 m	MTOW 5,3 t	
PREFERRED APPROACH / DEPARTURE DIRECTION 090 / 270° DECK HEADING 360°			
HIGHEST OBSTACLE ON INSTALLATION 340 ft AMSL / 260 ft AHLD (ANTENNA MAST)		HIGHEST OBSTACLE IN THE VICINITY 509 ft MSL (WTG ALPHA VENTUS)	
REFUELLING FACILITY N/A	GROUND POWER UNIT N/A	LANDING NET N/A	STATUS LIGHT N/A
FIRE FIGHTING FACILITIES			
PRIMARY FIFI N/A	SECONDARY FIFI N/A	CO₂ 2 x 20 kg	DRY POWDER 2 x 50 kg

INSTALLATION TOP VIEW

